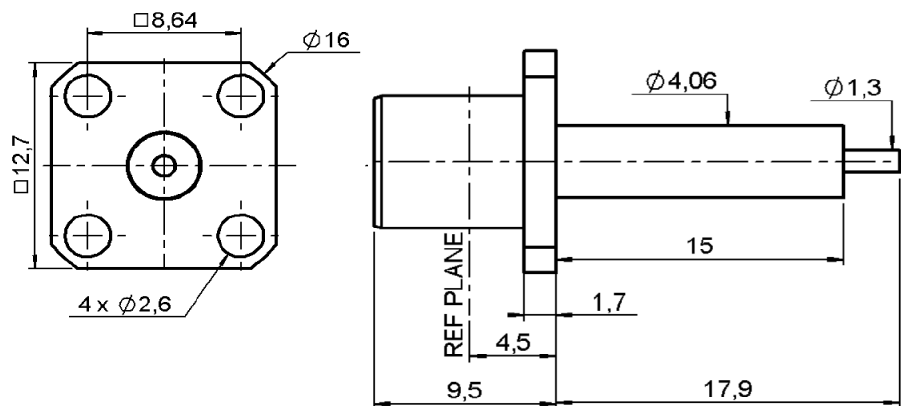


DATA SHEET

| P/N | DESCRIPTION | |
|-------------------------|------------------------------------|--------------------------------|
| KS331500 | BMA JACK SQUARE PANEL MOUNT FOR WG | |
| ELECTRICAL DATA | | NOTES |
| IMPEDANCE | 50 OHM | |
| FREQUENCY RANGE | DC - 22 GHz | |
| V.S.W.R. | 01:03 01:18 01:35 | DC - 1 GHz 10 GHz 18 GHz |
| TEMPERATURE RANGE | - 65/+125 C | |
| VOLTAGE RATING | 500 Veff max | |
| INSULATION RESISTANCE | 5000 MΩ | |
| DIELECTRIC WITHSTANDING | 1500 Veff min | |
| RF LEAKAGE | - 0.05 dB | |
| ATTENUATION | 0.05 dB | |
| 2002/95/EC (RoHS) | COMPLIANT | |

MATERIAL DATA

| CONNECTOR PART | MATERIAL | PLATING |
|----------------|------------------|-----------------|
| BODY | STAINLESS STEEL | PASSIVATED |
| CENTER CONTACT | BERYLLIUM COPPER | GOLD 1,3 micron |
| INSULATORS | PTFE | |
| OUTER CONTACT | BERYLLIUM COPPER | GOLD 1,3 micron |
| OTHER PARTS | STAINLESS STEEL | PASSIVATED |



DIMENSIONS IN mm